



*Get digital access to work cards anywhere, anytime, on any mobile devices*

# Flatirons eTaskcard

Turning work packages into actionable tasks through intelligent work card management

## Resolve Work Card Management Challenges

Flatirons eTaskcard is a digital technical operations module that allows airlines and MROs to import, revise, and deliver the latest maintenance task cards. eTaskcard turns work packages into actionable tasks and enables engineers and technicians in maintenance work areas to access their work cards via a digital inbox or work queue from any mobile device, desktop, or laptop. It supports all work card types and provides several benefits, including:



Quickly deploy eTaskcard to efficiently execute line maintenance logbook tasks and maintenance program work packages



Consolidate technical data and view task cards from all your OEMs onto a single viewing and execution platform



Access the latest approved maintenance, engineering, and company manual documentation for all your assets, aircraft fleets, engines, and components on any device type via Flatirons Pinpoint and Pinpoint Mobile



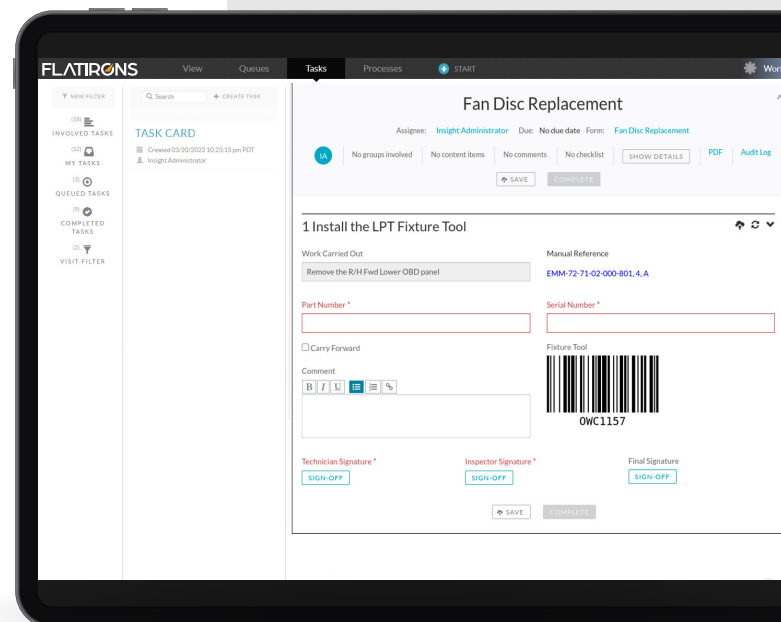
Improve the accuracy, efficiency, and velocity of your technical staff by executing maintenance tasks electronically



Help ensure on-time performance, meet critical aircraft check timelines, expedite parts ordering, generate non-routine task cards, capture technician feedback, and simplify tracking and record keeping



Maximize touch time for line maintenance and shorten the execution time for checks



## Get a Complete End-to-End Solution

Airlines and manufacturers depend on Flatirons— from content management to interactive publications to process management. Flatirons eTaskcard is a vital component in our Flatirons Technical Content and Workflow Management platform, offering the most advanced OEM-independent solution for improved control of mobile maintenance, technical operations, and maintenance operating manual content publishing for Operators, MROs, and OEMs.

We offer a comprehensive solution that simplifies the complexity of maintaining multiple airframes and engines, increases maintenance productivity, lowers operating costs, and can provide a significant ROI.

## Build On Tech Ops Capabilities of Flatirons Technical Content Management

The world's leading airlines and manufacturers depend on eTaskcard to provide rich features for auto-generating work cards using maintenance manual source material. This process not only simplifies and automates work card creation, but ties work card updates to ongoing revisions of airframe, equipment, component, and engine maintenance manuals. By combining the world's most innovative tech ops solution with a robust mobile viewer and electronic sign-off, eTaskcard provides operators with a powerful new tool for driving productivity improvements and eliminating the cost and waste associated with printing work packages on paper.

## Perform Actionable Tasks with Digital Task Card Creation and Management

Flatirons eTaskcard enables seamless end-to-end digital task card authoring by creating new or re-using up-to-date technical content. eTaskcard is designed to simplify multi-spec, multi-format delivery requirements and can be integrated with any viewer.

eTaskcard utilizes innovative delivery methods to optimize information at the point of performance. You can maximize your ROI in S1000D, ATA, and PDF formatted data by providing flexible, incremental delivery options (via kiosks, mobile devices, and advanced paper options) for up-to-date information to your engineers and technicians.

Using eTaskcard, you can improve the accuracy and productivity of planners, technicians, and inspectors. You can save valuable time by creating on-the-spot, non-routines cards via mobile devices, capturing and attaching photos using a tablet/mobile camera, and automatically adding the new work scope to the evaluation queue with a single tool. This significantly reduces the execution time of repairs and positively impacts asset utilization rates. The system integrates with leading manufacturer Enterprise Resource Planning EPR and maintenance scheduling systems helping ensure that your existing investments are fully utilized and preserved.

# Address Your Critical Maintenance Needs with eTaskcard



## Creation



- Easily customize your data with direct local edit of maintenance manuals and eTaskcards using the Pinpoint viewer
- Augment content with public company-wide or user private annotations displayed in the viewer
- Rapidly develop job card forms using intuitive, user-friendly creation tools
- Quickly create master or unconditioned job cards using pre-defined forms, including links to the latest released AMM and EM Maintenance tasks
- Instantly create non-routine tasks and automatically carry forward and track accomplishment and reconciliation
- Customize task cards by adding and managing embedded links within the content



## Packaging



- Accurately associate task cards to the existing approved master work card
- Build, assemble, and launch the execution of a work packages
- Streamline the assembly of work packages following a customer work request
- Eliminate failed uploads by screening data for errors with comprehensive rules validation tools



## Workflow



- Create and manage workflows that maximize collaboration and ensure process compliance
- Quickly access critical information with optimized manual-specific searches: e.g., TSM-fault codes, FIN, P/N, Wiring Manuals
- Electronically sign-off and track work card completion
- Supplement electronic sign-off with valuable user feedback provided in data field entries
- Submit and manage document change requests



## Productivity



- Perform intuitive predictive searches across all manuals, graphics, and libraries
- Quickly Navigate to frequently accessed information that users have bookmarked
- Maintain focus on relevant information by using Pinpoint applicability filtering features
- Simplify archival retention by generating PDF records after the completion of an eTaskcard
- Increase efficiency by expanding embedded links within a manual and viewing the linked content in-line within the open manual
- Boost productivity with split-screen thumbnail graphics navigation and magnification features

Improve communications and control of mobile maintenance and technical operations with eTaskcard

The screenshot displays the FLATIRON eTaskcard application interface on a tablet. The top navigation bar includes 'View', 'Queues', 'Tasks', 'Processes', and 'START'. The main content area is titled 'TASK CARD' and shows the following details:

- Assignee:** Insight Administrator
- Due:** No due date
- Part of process:** Work Order: 5010
- Part of:** Work Package: 50101 Form [Details]
- Status:** IA (Insight Administrator), OJ (On Job), No groups involved, No content items, No comments. Buttons: SHOW DETAILS, PDF, Audit Log.
- Actions:** REQUEUE, SAVE, COMPLETE.
- Task Details:**
  - Post Lease Maintenance Inspections / Tasks:** 03/21/2022
  - Work Order Number:** 5010
  - Customer:** AMERICAN AIRLINES
  - Engine Type:** BR710
  - Work Scope Level:** P1
  - Engine Serial Number:** 1234
  - Hidden Damage Inspection Required?\*** Yes
- Preliminary Receipt Inspection C/W\*:** SIGNED (highlighted in green), UNSIGN.
- Signature:** Signed by Insight Administrator, 03/29/2022 2:09:38 pm PDT.
- Procedure:** 1 Procedure. Do these steps to install the lever assembly. Manual Reference: Task 27-61-01-400-801 Subtask 420-003.
- Comment\*:** Completed per Instructions.
- Accomplished by:\***

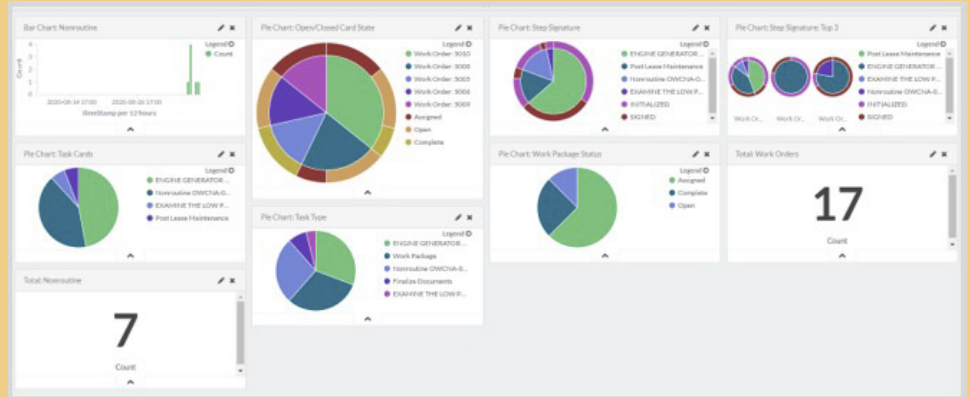


For more information, contact us at [info@flatironssolutions.com](mailto:info@flatironssolutions.com).



## Visualize Work Progress

With eTaskcard, managers can monitor work package progress in real-time with an analytics-based dashboard as work card sign-off is actioned on digitally. You can dynamically create task assignments and adjustments to the overall schedule; this leads to measurable productivity improvements over costly paper-based processes and increases overall asset utilization.



## Did You Know?

eTaskcard can help your organization reach its sustainability goals fast by reducing your current dependency on paper.

A recent Flatirons survey found that a midsized operator using paper-based work cards (along with image capture and hard-copy storage—including a 17,000 sq. ft. warehouse) spent between \$2.7 and \$3M per year in incremental costs solely on paper. Digitizing your technical operations means significant improvements in mechanic productivity, with the added bonus of back-office cost reduction, including eliminating paper costs.



5755 Central Avenue  
Suite A  
Boulder, CO 80301  
USA

[www.flatironssolutions.com](http://www.flatironssolutions.com)

[info@flatironssolutions.com](mailto:info@flatironssolutions.com)

+1 303 544 0514

© Flatirons, Inc. All rights reserved. Flatirons and the Flatirons logo are registered trademarks of Flatirons, Inc. Other product and service names might be trademarks of Flatirons or its affiliates. 07E605DSFETCv1