

## THE CHALLENGE

Learning organizations face the market challenge of producing courseware across more mediums, with higher levels of customization, in less time than ever before. Efficient content re-use and re-purposing is a key requirement for meeting this challenge, but it is often made more difficult by department or division-level content silos, the inability to readily create content in structured (XML-based) forms conducive to re-use, and the lack of a centralized location for asset discovery.

Traditional mechanisms for addressing this problem often involved sacrificing key authoring and product assembly functionality associated with a Learning Content Management Systems (LCMS) like Xyleme in favor of an Enterprise Content Management System (ECMS) like EMC Documentum. With the advent of this unique offering, learning organizations have the opportunity to enjoy the best of both worlds -- the learning-specific features available through an LCMS combined with the robust discovery, workflow, content transformation, and core library services capabilities of a market leading platform like Documentum.

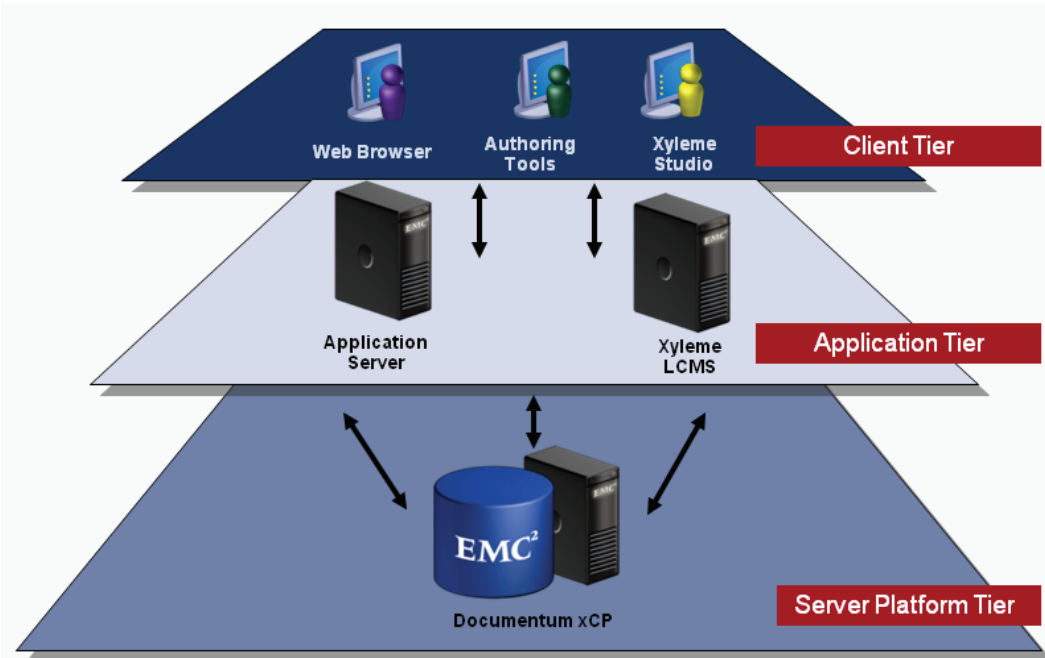
## THE RESPONSE

Based on a solution delivered for a leading learning publisher, Flatirons Solutions and Xyleme have created a compelling new offering for Documentum capable of integrating content, metadata, and workflow activities between the EMC Documentum platform and the Xyleme LCMS. This powerful offering was built using the xCelerated Composition Platform (xCP), a set of configuration-friendly modules provided by EMC that dramatically decrease implementation timeframes, minimize required customizations, and reduce the overall cost of implementation.

The Documentum component manages the storage, characterization, and discovery of reusable learning content assets and finished goods. Content is organized by project, and is tagged with extended metadata attributes to make it searchable by users seeking reusable assets. Assets housed within the Documentum repository are rigorously managed, with version tracking, security, and flexible transformations supported to facilitate reuse of rich media content in channel optimized formats. The included TaskSpace module provides configuration-driven workflow support that can be managed and maintained by business users, and the XML Store (a native XML database that is tightly integrated with the Content Server) is also included for high performance XQuery searches against extended metadata.

The fully integrated Xyleme LCMS component provides support for product-level assemblies of source content, as well as the output of those assemblies into finished product deliveries. The Xyleme environment also provides authoring support, as well as an integration into the Documentum repository that allows federated search of both working content as well as finished goods and related source assets archived within Documentum. As product assemblies are completed within Xyleme, automated workflows transfer that content and metadata back to Documentum for visibility by users across the learning organization, and for long term storage and versioning.

## LOGICAL ARCHITECTURE



## BENEFITS FOR LEARNING ORGANIZATIONS

Key benefits of this powerful integration include

- **Centralized access to reusable learning content:** By providing a “one stop shop” for all assets and metadata, project staff working on learning products have a single repository with standardized metadata descriptors for all managed content. The result is improved support for discovering re-usable assets and reduced need for duplicating existing assets that are difficult to locate, transform, or modify.
- **Greater levels of process automation:** Automated transfers of content and metadata between CMS and LCMS components, workflow support for asset review and approval, and collaborative workspaces to minimize reliance on error prone email correspondence.
- **Quicker time to market for learning products:** By facilitating asset re-use (rather than costly and time consuming creation of duplicate assets) and minimizing the latency in the publishing of approved assets to other project groups, the eLearning platform promotes quicker delivery of final products.
- **Greater flexibility for the creation of custom products:** By leveraging XML standards and component-level content, customized products tailored to a specific client or use case can be delivered with a higher degree of automation and a lower cost of production.

### JOE MIHALIK

*VP of Sales and Marketing*

+1 (303) 542-2114 | Office

joe.mihalik@flatironsolutions.com

www.flatironsolutions.com

4747 Table Mesa Drive, Ste 200

Boulder, CO 80305